

ValueJet

ValueJet VJ-1324



High quality printer for durable graphics

The cost-effective professional ValueJet 1324 (1371 mm - 53.97") is perfectly suited for small to mid-range sign makers and print providers.

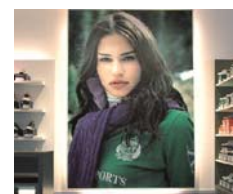
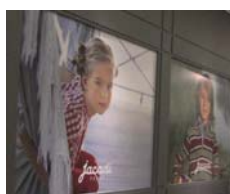
Flexible, reliable and able to deliver excellent print quality for volume production runs as well as short print runs, this printer will prove to be a reliable workhorse for all high-quality indoor and outdoor banners, vehicle graphics, backlit displays and much more. A perfect match for businesses with medium and higher print volumes.

Product Highlights

- Powerful Eco printer, featuring new head technology
- Increased print speeds & improved print quality
- Proven technology plus a new set of innovative comfort features
- Impeccable print quality every time with Mutoh Intelligent Interweaving print technology (i²)
- Print speeds up to 27.9 m²/h

Application Possibilities

The VJ-1324 is suited for the production of a wide variety of outdoor and indoor prints : long-term outdoor posters, billboards, building announcements, signs and banners, backlit signage, POS displays, vehicle graphics, fine art reproduction, posters, etc..



MUTOH

ValueJet



VJ-1324

ValueJet VJ-1324 Eco Ultra Printer

SPECIFICATIONS

Technical Key Specifications

Print Technology	Drop-on-demand Micro Piezo Inkjet Technology
Print Head	1
Nozzle Configuration	180 nozzles x 8 lines
Drop Mass Range (pl)	3.5 to 35.2
Head Heights	Low : 1.2 mm High : 2.0 mm

Media Specifications

Max. Media Width	1371 mm (53,97")
Max. Print Width	1361 mm (53,58")
Max. Media Thickness	0.3 / 1.3 mm *

* : Max. media thickness is specified per head height

Media Measurements *	Ø 150 mm / 2" & 3" / 19 kg
----------------------	----------------------------

* : Standard non-motorised roll-off system

Media Drying System	Individually controlled pre-heater, fixer & dryer (30 - 50 °C)
---------------------	--

Ink Specifications

Ink Type	Eco Ultra
Ink Volume	220 ml
Ink Colours	CMYK
Ink Consumption *	8 ml / m ²

* : Average ink consumption at @720 dpi - coverage of 67 %

UV durability - without lamination	3 years outdoor *
------------------------------------	-------------------

* : For heavy duty applications where mechanical stress is involved, lamination is required. Stabilisation is required prior to lamination.

Performance

High Quality (720 x 1080)	3.9 m ² /h
Quality (720 x 720)	5.9 m ² /h
Quality Production (720 x 1080)	7.9 m ² /h
Production (720 x 720)	11.8 m ² /h
Speed production (720 x 720)	16.4 m ² /h
Billboard (360 x 720)	27.9 m ² /h

Power Consumption

During Printing	500 W
In Stand-by	45 W
Warming Up	≤ 1550 W
Power Supply	AC 100-120 V / AC 200-240 - 60/50 Hz

Recommended Working Environment

Temperature	22 °C - 30 °C with Δt: max. 2 °C/h
Humidity	40 % - 60 % (no condensation) with ΔRH: max. 5% RH/h

Machine Measurements

Width x Depth x Height	1916 x 685 x 1218 mm
Weight	82.3 kg

MUTOH